

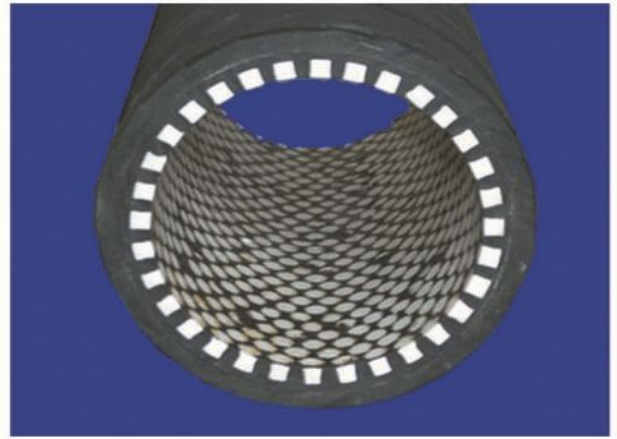
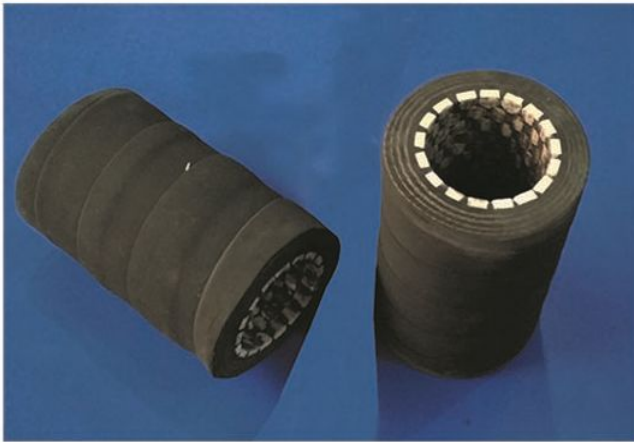
Wear Resistant Ceramics Manufacturer

CHEMSHUN[®]
CERAMICS



Ceramis Hose

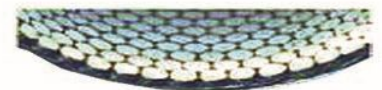
Chemshun ceramic hose is one of good ideal conveyor which are widely used in highly aggressive environments for wear resistance and anti-impact. Embedding the high alumina ceramics into the rubber, the ceramic hose could bear the hard materials of pipe friction stead of rubber. It is widely used in dredging mining, port, power plant, steel plant and cement plant, etc.



The flexible hose is lined with ceramic cylinder for wear resistance and with the advantage of flexibility, the ceramic hose could be curved in any direction.



Ceramic cylinders lined



PINGXIANG CHEMSHUN CERAMICS CO.,LTD



in English



En español

Factory & Office Address: Non-metal Area of Shangliuyuan, Economic Development Zone
Pingxiang City, Jiangxi Province, P.R. China. Code 337000
Tel: 86-799-6790781, 2181002, 2181004 Fax: 86-799-6790785

Website: www.chemshun.com & www.chemshun-es.com Email: office@chemshun.com

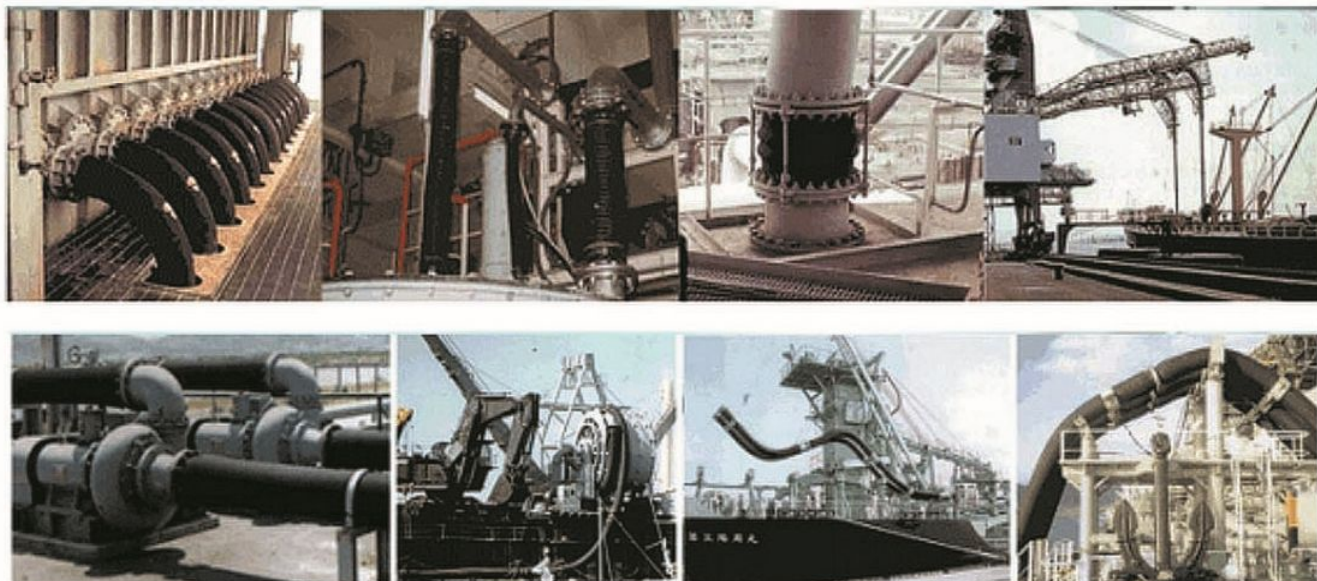
Wear Resistant Ceramics Manufacturer

CHEMSHUN[®]
CERAMICS



Applications of Ceramic Hose

Chemshun ceramic hose has the advantages of flexibility, wear resistance and anti-impact, acid-resistant and wear alkaline. The ceramic hose is used widely in the fields of port, steel plant, power plant, cement plant and mining industry, etc.



Technical Datas

| Diameter pol | | ID | OD | Wear bending | Length | Pressure |
|--------------|-------|-------|-----|--------------|--------|----------|
| in inch | in mm | mm | mm | Mpa | m | Kg/c m2 |
| 1 | 25 | 25.4 | 42 | 300 | 10 | 10 |
| 1 1/4 | 32 | 31.8 | 50 | 380 | 10 | 10 |
| 1 1/2 | 38 | 38.1 | 56 | 480 | 10 | 10 |
| 2 | 50 | 50.8 | 72 | 600 | 20 | 10 |
| 2 1/2 | 65 | 63.5 | 94 | 780 | 20 | 10 |
| 3 | 75 | 76.2 | 105 | 900 | 20 | 10 |
| 3 1/2 | 90 | 88.9 | 120 | 1080 | 20 | 10 |
| 4 | 100 | 101.6 | 140 | 1200 | 20 | 10 |
| 5 | 125 | 127 | 160 | 1500 | 20 | 10 |
| 6 | 150 | 152.4 | 190 | 1800 | 20 | 10 |
| 8 | 200 | 200 | 235 | 2400 | 10 | 10 |
| 10 | 250 | 250 | 290 | 3000 | 10 | 10 |
| 12 | 300 | 300 | 350 | 3600 | 10 | 10 |

PINGXIANG CHEMSHUN CERAMICS CO.,LTD



in English



En español

Factory & Office Address: Non-metal Area of Shangliuyuan, Economic Development Zone
Pingxiang City, Jiangxi Province, P.R. China. Code 337000
Tel: 86-799-6790781, 2181002, 2181004 Fax: 86-799-6790785
Website: www.chemshun.com & www.chemshun-es.com Email: office@chemshun.com